

Double-acting pneumatic cylinder type SC



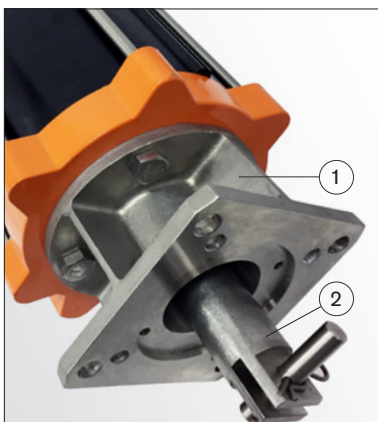
Double-acting pneumatic cylinder type SC

Stafsjö's standard double-acting pneumatic cylinder type SC is manufactured by Ebro Armaturen. It is a solid construction designed for tough knife gate applications available from 100 mm (4") up to 320 mm (12.6") bore diameter.

The SC cylinder has a hard anodized aluminium barrel with coated aluminium caps, hold strongly together by stainless steel tie rods to enable a long-term linear operation independent of position. The SC also include several internal and extended precision supports to further guarantee the linear stroke. A piston rod wiper in bottom end cap ensure that no material enter the cylinder.

The supply pressure for the cylinder should be max 10 bar and the compressed air should be dry or slightly oil misted. Temperature range for the actuator is -30 to +100 °C.

The SC cylinder is CE marked and also approved for use in EX areas according directive 2014/34/EU Group II category 2G/2D (zone 1 or 21).



Assembly kit included for Stafsjö's knife gate valves

Stainless steel adapter (1) and gate clevis (2) kit are supplied assembled on the SC cylinder to make it easy to install on Stafsjö's different knife gate valves.



Namur interface for direct assembly of solenoid valves

Integrated Namur interface according VDI/VDE 3845 (3) on the top cover enable direct assembly of solenoid valves which reduce piping efforts to minimum.



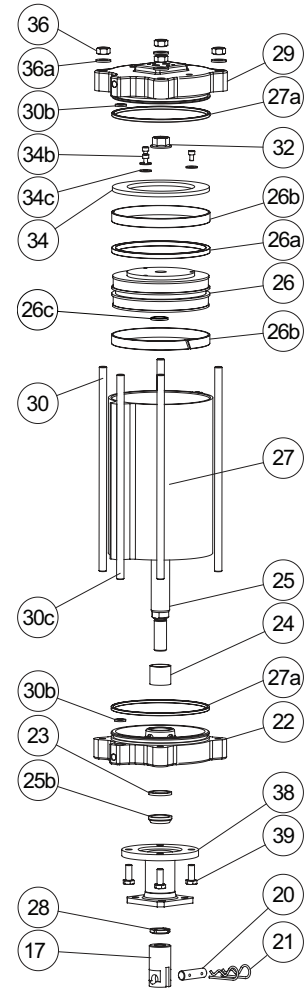
Prepared for magnetic limit switches up to SC200

The SC is supplied as standard with a magnetic ring on the piston and an integrated T groove (4) in the cylinder barrel up to SC200 for installation of magnetic limit switches according to ISO 15552.

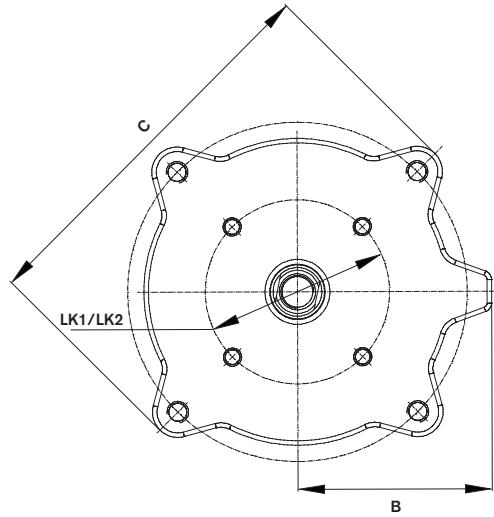
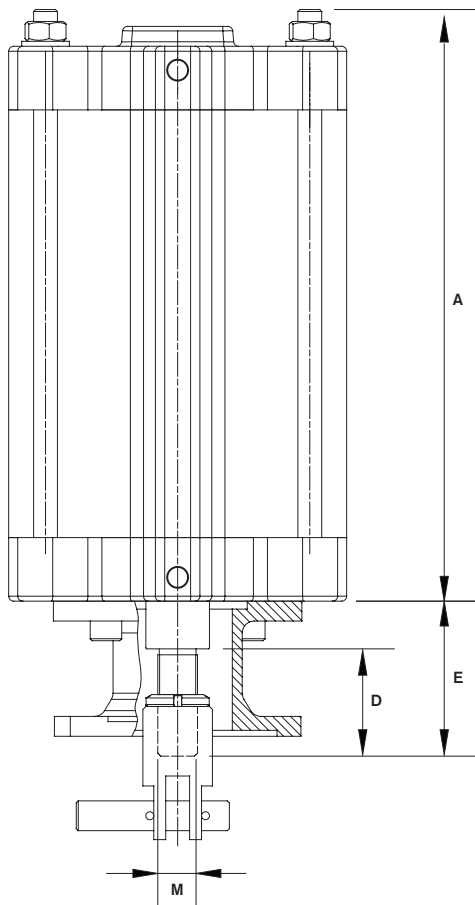
Part list SC100 - SC320

Pos.	Detail	Material
17	Gate clevis	Stainless steel (EN 1.4305)
20	Clevis pin	Stainless steel (EN 1.4305)
21	Split pins	Stainless steel (EN 1.4305)
22	Bottom end cap	Anodized and powder coated aluminium (EN AC 46000)
23*	Piston rod sealing	Nitrile
24	Piston rod guide	Iglidur G
25	Piston rod	Steel (C45), hard chromed and phosphated in the threaded ends
25b*	Piston rod wiper	Nitrile 90N
26	Piston	Aluminium (EN AC 46000)
26a*	Piston sealing	Nitrile
26b	Support ring	POM
26c*	Piston rod o-ring	Nitrile
27	Cylinder barrel	Anodized aluminium (EN AW 6063-T66)
27a*	End cup o-rings	Nitrile
28	Locking nut	Stainless steel (EN 1.4305)
29	Top end cap	Anodized and powder coated aluminium (EN AC 46000)
30	Tie rod	Stainless steel (EN 1.4301)
30b*	End cup o-rings	Nitrile
30c	External air pipe <i>only on SC250-SC320</i>	Stainless steel (EN 1.4301)
32	Ripp lock nut	Zinc coated steel
34	Magnetic washer	Flexo 150
34b	Screw	Stainless steel (A2)
34c	Washer	Stainless steel (EN 1.4301)
36	Nut	Stainless steel (EN 1.4301)
36a	Washer	Stainless steel (EN 1.4301)
38	Valve adapter	Stainless steel (EN 1.4308)
39	Hex socket screws	Stainless steel (A2)

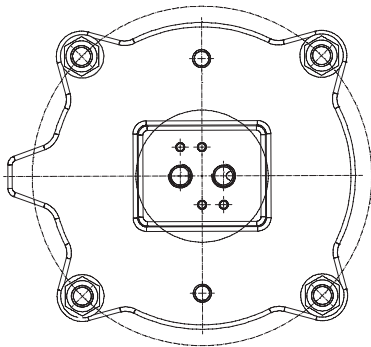
* Recommended spare parts



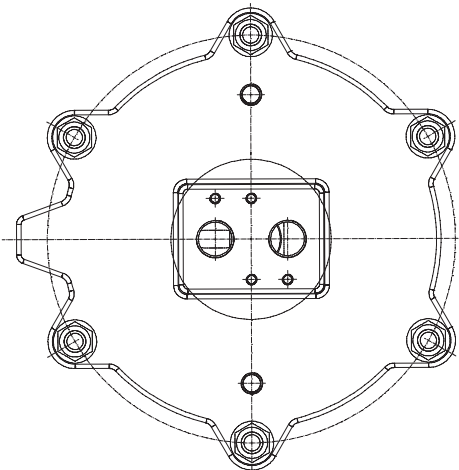
Main dimensions (mm)



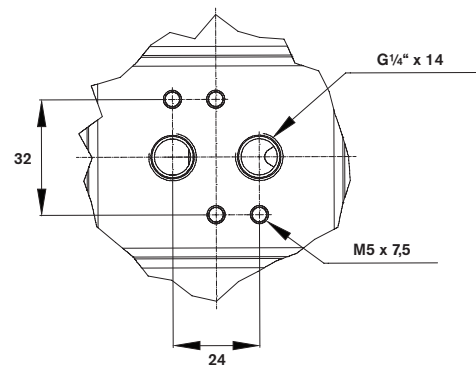
SC100 - SC160



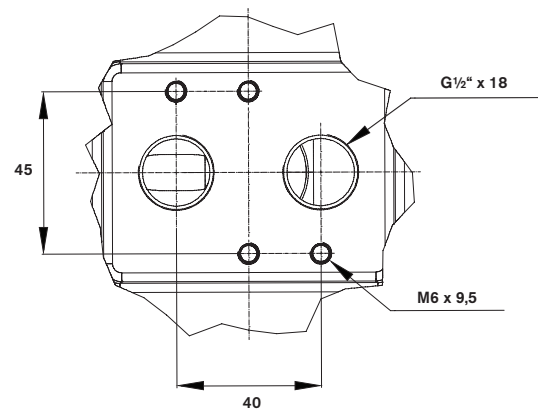
SC200 - SC320



Namur Interface
VDI/VDE 3845



Namur interface
VDI/VDE 3845



Main dimensions (mm)

SC size	Stroke length	A	B	C	D	E	M	LK1	LK2	Weight ¹⁾ (kg)	Filling volume in NL / Stroke at 1 atm
100	90	219,0	72,0	148	32	48	M16 x 1,5	F07	-	3,4	1,87
100	115	244,0	72,0	148	32	48	M16 x 1,5	F07	-	3,6	2,27
100	140	269,0	72,0	148	32	48	M16 x 1,5	F07	-	3,8	2,65
100	165	294,0	72,0	148	32	48	M16 x 1,5	F07	-	4,0	3,04
125	90	232,0	88,0	176	54	78	M20 x 1,5	F10	-	5,5	2,66
125	115	255,0	88,0	176	54	78	M20 x 1,5	F10	-	5,9	3,40
125	140	280,0	88,0	176	54	78	M20 x 1,5	F10	-	6,3	4,02
125	165	305,0	88,0	176	54	78	M20 x 1,5	F10	-	6,6	4,62
160	90	263,0	107,5	216	54	78	M20 x 1,5	F10	-	8,9	4,50
160	115	286,0	107,5	216	54	78	M20 x 1,5	F10	-	9,4	5,75
160	140	311,0	107,5	216	54	78	M20 x 1,5	F10	-	9,6	6,80
160	165	336,0	107,5	216	54	78	M20 x 1,5	F10	-	10,0	7,79
160	215	386,0	107,5	216	54	78	M20 x 1,5	F10	-	11,2	9,77
160	270	441,0	107,5	216	54	78	M20 x 1,5	F10	-	11,9	11,95
160	320	491,0	107,5	216	54	78	M20 x 1,5	F10	-	12,8	13,92
200	140	341,5	130,0	256	72	102	M30 x 1,5	F10	F14	16,1	10,43
200	165	366,5	130,0	256	72	102	M30 x 1,5	F10	F14	16,8	12,30
200	215	412,5	130,0	256	72	102	M30 x 1,5	F10	F14	18,0	16,01
200	270	467,5	130,0	256	72	102	M30 x 1,5	F10	F14	19,4	19,43
200	320	517,5	130,0	256	72	102	M30 x 1,5	F10	F14	20,7	22,51
200	350	547,5	130,0	256	72	102	M30 x 1,5	F10	F14	21,5	25,16
200	400	597,5	130,0	256	72	102	M30 x 1,5	F10	F14	22,8	27,43
200	423	624,5	130,0	256	72	102	M36 x 2	F10	F14	23,4	29,00
200	450	647,5	130,0	256	72	102	M36 x 2	F10	F14	24,3	30,51
200	550	747,5	130,0	256	72	102	M36 x 2	F10	F14	26,9	36,66
250	215	461,0	163,0	322	72	102	M30 x 1,5	F10	F14	28,9	21,89
250	270	516,0	163,0	322	72	102	M30 x 1,5	F10	F14	30,7	27,49
250	320	566,0	163,0	322	72	102	M30 x 1,5	F10	F14	32,4	32,58
250	350	596,0	163,0	322	72	102	M30 x 1,5	F10	F14	33,4	37,83
250	400	646,0	163,0	322	72	102	M30 x 1,5	F10	F14	35,0	42,67
250	450	696,0	163,0	322	72	102	M36 x 2	F10	F14	36,9	47,52
250	500	746,0	163,0	322	72	102	M36 x 2	F10	F14	38,6	52,37
250	525	771,0	163,0	322	72	102	M36 x 2	F10	F14	39,4	55,00
250	630	876,0	163,0	322	72	102	M36 x 2	F10	F14	42,9	62,68
250	800	1046,0	163,0	322	72	102	M36 x 2	F10	F14	48,5	81,44
320	320	577,0	201,5	406	72	102	M30 x 1,5	F10	F14	50,2	58,37
320	500	757,0	201,5	406	72	102	M36 x 2	F10	F14	58,7	87,09
320	575	832,0	201,5	406	72	102	M36 x 2	F10	F14	62,1	99,06
320	700	957,0	201,5	406	72	102	M36 x 2	F10	F14	67,9	119,01
320	715	972,0	201,5	406	72	102	M36 x 2	F10	F14	68,6	121,41
320	800	1057,0	201,5	406	72	102	M36 x 2	F10	F14	72,5	134,97
320	1030	1287,0	201,5	406	72	102	M36 x 2	F10	F14	83,2	171,68

1) Excluding valve assembly parts.

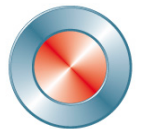
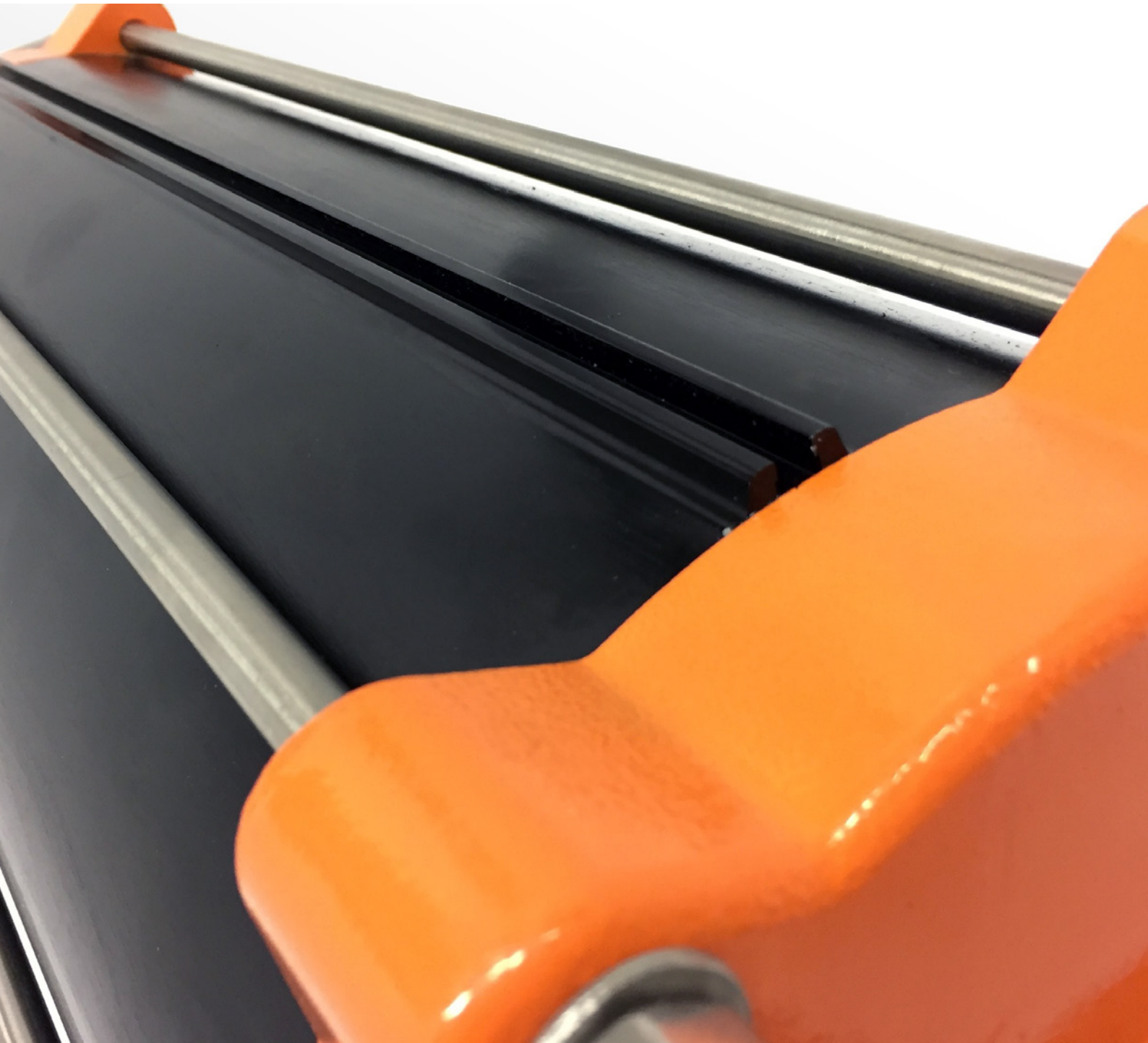
Subject to change without notice

Stroke force in Newton (N)

Type SC	4 bar		4,5 bar		5 bar		5,5 bar		6 bar	
	Close	Open	Close	Open	Close	Open	Close	Open	Close	Open
100	3140	3016	3532	3393	3925	3770	4319	4147	4712	4524
125	4908	4628	5522	5207	6135	5785	6749	6364	7363	6939
160	8044	7760	9050	8730	10055	9700	11061	10670	12063	11639
200	12568	12064	14139	13572	15710	15080	17281	16588	18849	18095
250	19635	19132	22089	21523	24543	23915	26998	26306	29452	28698
320	32170	31667	36191	35626	40212	39584	44234	43542	48255	47501

Subject to change without notice

Further information is available on www.stafsjo.com



Stafsjö
SINCE 1666



**Valve
& Automation**
Total Valve & Control Solutions®

JOHANNESBURG
Tel: 011 397 2833

DURBAN
Tel: 031 579 2593

South Africa:
0861 103 103

E-mail: sales@valve.co.za
www.valve.co.za



SCAN ME